

CONSTRUCTION PRODUCT GUIDE

WOVEN WIPING CLOTHS
NONWOVEN WIPERS
PPE AND SAFETY
HI-VIS SAFETY APPAREL
FACILITY AND SAFETY SUPPLIES
CHEMICALS
SPILL CONTROL
APPAREL
RESTROOM SUPPLIES

WOVEN WIPING CLOTHS

New Unwashed T-Shirt Material



Exact Cut Jersey Knit T-Shirt Wipers

| | |
|------------|--|
| 7000153-12 | White, 12" x 12"; Available in 25 and 50 lb. cases |
| 7000153-18 | White, 14" x 18"; Available in 25 and 50 lb. cases |



Cotton T-Shirt Material

Wiper sizes vary

| | |
|-------|--|
| 25304 | Mixed colors; available in 25 and 50 lb. cases |
| 15304 | White; available in 25 and 50 lb. cases |
| 15600 | Gray; available in 50 lb. cases and 25 and 50 lb. SpaceWorks packaging |

New Washed T-Shirt Rags



Economy White T-Shirt Material

Wiper sizes vary

| | |
|-----|---------------------------------------|
| 458 | Available in 10, 25, and 50 lb. cases |
|-----|---------------------------------------|



Cotton T-Shirt Material

Wiper sizes vary

| | |
|-------|--|
| 72500 | White; available in 25 and 50 lb. cases and 25 and 50 lb. SpaceWorks packaging |
| 72600 | Gray; available in 25 lb. cases and 50 lb. SpaceWorks packaging |



Color-Stripped Cotton T-Shirt Material

Wiper sizes vary

| | |
|-------|----------------------------------|
| 72650 | Available in 25 and 50 lb. cases |
|-------|----------------------------------|

Towels



B-Grade Cotton Bar Mops

100% cotton; 14" x 17"

| | |
|-------|---|
| 10400 | Available in 25 and 50 lb. cases and 25 and 50 lb. SpaceWorks packaging |
|-------|---|



C-Grade Cotton Bar Mops

| | |
|-------|--|
| 10250 | Available in 50 lb. cases and 10 and 25 lb. SpaceWorks packaging |
|-------|--|



Terry Towels

Mostly cotton; towel sizes vary

| | |
|-------------|---|
| 11500-50-SW | Mixed colors; 50 lb. SpaceWorks packaging |
| 11501 | White; available in 50 lb. cases and 10 and 25 lb. SpaceWorks packaging |



Shop Towels

| | |
|----------|--|
| 12400-CS | Red, 18"x 18", 500/case |
| 12300 | White; 12-18" x 12-18"; available in 50 lb. cases and 25 and 50 lb. SpaceWorks packaging |

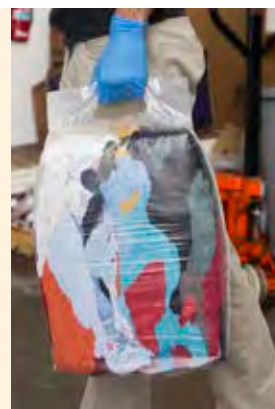
The SpaceWorks® Handle Bag

Easy to carry and store

Hangs anywhere for easy dispensing

Reinforced handle

Available in 10 lb. and 25 lb. packaging



WOVEN WIPING CLOTHS

Reclaimed Rags and Towels



Reclaimed Colored T-Shirt Wipers

Wiper sizes vary; contains mixture of T-shirt and polo material

| | |
|-------|--|
| 71700 | Gray; available in 25 and 50 lb. cases and 10, 25, and 50 lb. SpaceWorks Packages |
| 71300 | Mixed colors; available in 50 lb. cases, 50 lb. knit pack, and 10, 25, and 50 lb. SpaceWorks packaging |



Reclaimed Huck Towels

Washed and sanitized per regulations; colors and sizes vary

| | |
|-------|--|
| 70400 | Available in 5, 10, 25, and 50 lb. cases and 50 lb. SpaceWorks packaging |
|-------|--|



Reclaimed Sweatshirt Rags

| | |
|-------|---|
| 71200 | Mixed colors; available in 50 lb. cases, 50 lb. knit pack, and 25 and 50 lb. Spaceworks packaging |
|-------|---|



Reclaimed Corduroy Rags

Colors and sizes vary

| | |
|-------|--|
| 71100 | Available in 50 lb. SpaceWorks packaging |
|-------|--|



Reclaimed White T-Shirt Rags

| | |
|-------|--|
| 71400 | White with printing; available in 50 lb. cases and 25 and 50 lb. SpaceWorks packaging |
| 71500 | White; available in 25 and 50 lb. cases, 50 lb. knit pack, and 10, 25, and 50 lb. SpaceWorks packaging |



Reclaimed Denim Rags

| | |
|-----|----------------------------------|
| 115 | Available in 25 and 50 lb. cases |
|-----|----------------------------------|

Other Available Packaging Options for Woven Rags



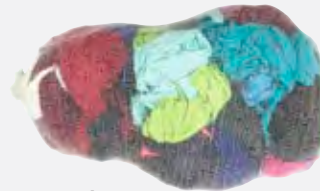
Flat Packed

First quality mill ends are packed flat and stacked in a case.



Bulk Packed

Wipers are pulled from bales and packed in cases to desired net weight.



Knit Pack

Crumpled pack wipers are packed in 5 pound increments for ease in use, portability and inventory control.

Advantages of the SpaceWorks® System

Storage

Spaceworks® bales use 50% less storage space than boxed wipers.

Improved Appearance

Spaceworks® will not crush like boxes.

Product Protection

Spaceworks® is impervious to rain and damp storage conditions, leaving wipers clean and dry.

Easy Dispensing

Slit the side of a Spaceworks® bag to dispense wipers - wipers stay clean and protected.

Clear Bag

Using quality gauge clear plastic bags allows you to see the wipers you are getting and indicates when you are running low.





NONWOVEN WIPERS

Pop-N-Wipe Wipers



Shopworks® W800 Extra Heavy Duty Wipers

| | |
|------------|--|
| N-GP080ITB | Blue, 16" x 12.75", 160/box, 1 box/case |
| 644625 | Red, 16.5" x 9.5", 100/box, 6 boxes/case |



Shopworks® W700 Heavy Duty Wipers

| | |
|--------|---|
| 644705 | White, 16" x 9", 100/box, 10 boxes/case |
|--------|---|



DuraWorks® W600 Heavy Duty Wipers

| | |
|---------|--|
| 34015-8 | White, 16" x 12.75", 180/box, 8 boxes/case |
|---------|--|



Absorbal® C40 All-Purpose Wipers

| | |
|---------|---|
| 575512 | Blue, 9.5" x 16.5", 100/box, 9 boxes/case |
| M-D7698 | Blue, 9" x 8.5", 200/box, 9 boxes/case |



Rags That Work®

Absorbent and strong like cloth, low lint
Compare to Scott® Rags in a Box

| | |
|----------|---|
| 575275-8 | White, 10" x 12.8", 275/box, 8 boxes/case |
|----------|---|

Jumbo Roll Wipers



Shopworks® W800 Extra Heavy Duty Wipers

Durable and low lint; 3 rolls/case

| | |
|----------|------------------------------------|
| 644143-3 | Blue, 12.5" x 12", 500 sheets/roll |
| 644053-3 | Red, 12" x 12.88", 475 sheets/roll |



Shopworks® W700 Heavy Duty Wipers

Heavy duty absorbency and strength; 3 rolls/case

| | |
|----------|---------------------------------------|
| 644605-3 | White, 13.1" x 12.6", 870 sheets/roll |
| 644603-3 | Blue, 13.1" x 12.6", 870 sheets/roll |



Absorbal® All-Purpose Wipers

General purpose wiper; 3 rolls/case

| | |
|----------|---|
| 575841-3 | White, 12.5" x 13.4", 950 sheets/roll |
| 534750-3 | Blue/White, 10" x 12.88", 750 sheets/roll |



Jumbo Roll Dispensers

Blue; holds all jumbo rolls

| | |
|--------|---------------------|
| 680592 | Wall mount, 1 each |
| 680590 | Floor stand, 1 each |



Pop-N-Wipe® Wall Bracket

White wall bracket for holding pop-up boxes

| | |
|-------|--------|
| 00937 | 1 each |
|-------|--------|

* Denotes item available through drop-ship

NONWOVEN WIPERS

Flat Pack Wipers



Shopworks® W800 Extra Heavy Duty Wipers

644041 Blue, 15" x 12", 30 lbs./case, 900/case



Absorbal® Heavy Duty Wipers

5391014 Red, 10-12" x 13-15", 30 lbs./case, 1200/case



Absorbal® All-Purpose Wipers

5341215-40-2PB Blue, 15" x 12"; 2 lb. polybags, 20 bags case, 2250/case



Economy Grease and Oil Wiper

197730 White, 15" x 13"; 30 lbs./case, 1440/case

Quarterfold Wipers



Absorbal® C40 All-Purpose Wipers

575520 Blue, 12.5" x 13"; 56/bag, 18 bags/case



Prematex® Heavy Duty Wipers

197406 Blue, 12" x 13.5"; 50/bag, 18 bags/case

Centerfeed Roll Wipers



CCP Absorbal® Heavy Duty Centerfeed Roll

539300-3 Red, 10" x 13"; 300 sheets/roll, 3 rolls/case

A820356 Dispenser, 1 each



CCP Absorbal® All Purpose Wipers

534500 Blue/White, 9" x 10"; 500 sheets/roll, 3 rolls/case

A820356 Dispenser, 1 each



CCP Absorbal® C40 Centerfeed Roll

53409BP-8-CS Blue/white, 9" x 15", 220 sheets/roll, 8 rolls/case

794328 Dispenser, 1 each



Quarterfold Dispenser

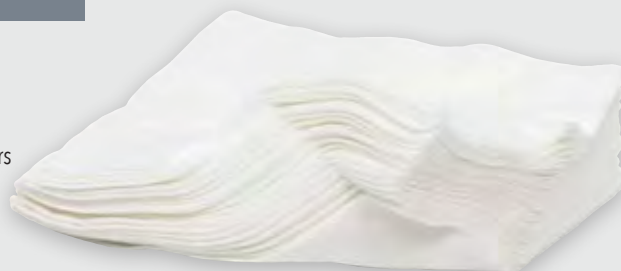
45888 Black/Blue, 1 each

Misfolds and Irregular Wipers

CCP Industries occasionally generates irregular and misfolded nonwoven wipers. Rather than discard them, CCP sells them at a discounted rate.

These wipers typically perform as well as first-quality wipers. The packaging of misfold and irregular wipers varies.

For more information and availability of these wipers, contact your local Area Manager!



PPE AND SAFETY

Eye Protection



Pyramex® Proximity Safety Glasses

Scratch-resistant anti-fog lens, flame resistant foam padding; removable foam gasket for dust protection and ventilation

| | |
|----------|----------------------------------|
| TS0139BS | Clear lens, 1 pair or 12/box |
| TS3239BS | Dark gray lens, 1 pair or 12/box |



Optima™ IQ-Iquity™ Anti-Fog Safety Eyewear

Water-based anti-fog coating built into the lens; water washable up to 20 times more than hydrophobic anti-fog glasses

| | |
|-------------|--------------------|
| RIOP1013ID* | Clear, 1 each |
| RIOP1023ID* | Smoke Gray, 1 each |



Radians® Rad-Apocalypse™ Safety Eyewear

Rubber temples with flared ends; neck cord included; coated protective lens

| | |
|--------|------------------------|
| AP1-10 | Clear, 12/box |
| AP1-20 | Smoke Gray, 12/box |
| AP1-40 | Amber, 12/box |
| AP1-90 | Indoor/Outdoor, 12/box |



ProWorks® Comfort Safety Eyewear

Adjustable temple arms; padded nose bridge; black frame

| | |
|-----------|-----------------------------|
| EW-C200C | Clear lens, 12/box |
| EW-C202G | Grey lens, 12/box |
| EW-C204IO | Indoor/Outdoor lens, 12/box |



CCP Value Eyewear

Frost frame, full coverage

| | |
|------------|-----------------------------|
| 751FTCL-DZ | Clear lens, 12/box |
| 751BKSM-DZ | Gray lens, 12/box |
| 751CLIO-DZ | Indoor/outdoor lens, 12/box |



Cover2 OTG Safety Glasses

Clear polycarbonate lens; fits over most prescription glasses

| | |
|------|----------------------|
| 6980 | 1 pair; 10 pairs/box |
|------|----------------------|



Capstone® 600 Series Anti-Fog Goggles

Superior protection against chemical splash and dust; Indirect ventilation; H2X Anti-Fog Technology Flexible and contours to user's face

| | |
|--------|---------------|
| 2T406G | Clear, 1 pair |
|--------|---------------|



CCP Goggles

Clear polycarbonate anti-fog lens; indirect ventilation

| | |
|-------|------------------|
| 7C235 | 1 each or 12/box |
|-------|------------------|



Venom® Ratchet Headgear with Polycarbonate Faceshield

Combo kit includes visor and head gear; three-part adjustment system; clear visor

| | |
|-----|---------------------------------------|
| 679 | Face shield kit; 1 each or 10/case |
| 675 | Replacement shield; 1 each or 10/case |



ProWorks® Lens Cleaning Wipes

Pre-moistened; not for use on coated lenses; individually packaged; anti-fog and anti-static

| | |
|--------|------------------------|
| 700406 | 100/box, 10 boxes/case |
|--------|------------------------|

PPE AND SAFETY

Disposable Gloves



ProWorks® Pyramid Grip Nitrile Disposable Gloves

6.5 mil, powder-free, 9.5" length, examination grade

| | |
|-------------------|---------------------------------------|
| GL-NT1070RF(SIZE) | Orange, M-2XL, 100/box, 10 boxes/case |
| GL-NT107BKF(SIZE) | Black, M-2XL, 100/box, 10 boxes/case |



ProWorks® 6 Mil Nitrile Gloves

Powder-free, 9" length; examination grade

| | |
|-----------------|---|
| GL-N107F(SIZE) | Black, S-2XL, 100/box, 10 boxes/case |
| GL-NB107F(SIZE) | Blue, S-2XL, 100/box, 10 boxes/case |
| GL-NG107F(SIZE) | Lime Green, S-2XL, 100/box, 10 boxes/case |



HandArmor® Black Nitrile Gloves

Powder-free, 5 mil, 9" length; examination grade

| | |
|----------------|------------------------------|
| GDNPF102(SIZE) | S-XL, 100/box, 10 boxes/case |
|----------------|------------------------------|



ProWorks® Orange Nitrile Gloves

Powder-free, 5 mil, 9" length; examination grade

| | |
|------------------|-------------------------------|
| GL-N1050RF(SIZE) | S-2XL, 100/box, 10 boxes/case |
|------------------|-------------------------------|



Hand Armor® Blue Nitrile Disposable Gloves

Powder-free, 5 mil, 9" length; examination grade

| | |
|----------------|-------------------------------|
| GDNPF101(SIZE) | S-2XL, 100/box, 10 boxes/case |
|----------------|-------------------------------|



ProWorks® Super Heavy Duty Blue Latex Gloves

Powder-free, 13 mil, 12" length; examination grade

| | |
|----------------|-----------------------------|
| GL-L113F(SIZE) | S-XL, 50/box, 10 boxes/case |
|----------------|-----------------------------|



ProWorks® Total Grip Heavyweight Natural Latex Gloves

Powder-free, 6.5 mil, 9" length; examination grade

| | |
|----------------|------------------------------|
| GL-L165F(SIZE) | S-XL, 100/box, 10 boxes/case |
|----------------|------------------------------|



ProWorks® Natural Latex Gloves

Powder-free, 5 mil, 9" length; industrial grade

| | |
|----------------|------------------------------|
| GL-L105F(SIZE) | S-XL, 100/box, 10 boxes/case |
|----------------|------------------------------|

Coated/Chemical Resistant Gloves



Nitrile Coated Gloves

Safety cuff; jersey lined

| | |
|-----------|------------------------------|
| GNSC-MN-2 | Smooth finish; blue, 12/pack |
| CFFR0554 | Rough finish; blue, 12/pack |



PVC Coated Gloves

Smooth finish; foam insulated; safety cuff

| | |
|--------|-----------------|
| R07101 | Orange, 12/pack |
|--------|-----------------|



Double-Dipped Coated PVC Gloves

Granular non-slip finish; safety cuff

| | |
|-------|-----------------------|
| 2640L | Yellow/black, 12/pack |
|-------|-----------------------|



Flock-Lined Triple-Dipped PVC Glove

12" length; chipped PVC coating for heavy duty grip and protection

| | |
|------|-----------------|
| 2453 | Orange; 12/pack |
|------|-----------------|



PVC Gloves

Black; chemically resistant to oil, grease, acids, and solvents; provides moderate abrasion resistance

| | |
|---------|------------------------------------|
| FR7201J | Rough finish; 12/pack |
| 7201 | Smooth finish; 12" length, 12/pack |
| 7801 | Smooth finish; 18" length, 12/pack |



Nitrile Gloves

13" long, 15 mil; diamond pattern finish on palm and fingers

| | |
|--------------|---------------|
| 990800(SIZE) | S-XL, 12/pack |
|--------------|---------------|



Neoprene Over Latex Glove

13" long, 28 mil; oil resistant; impermeable to gases, vapor, and moisture

| | |
|-------------|---------------|
| 4222-(SIZE) | M-XL, 12/pack |
|-------------|---------------|

* Denotes item available through drop-ship

PPE AND SAFETY

Leather Gloves



ProWorks® Leather Palm Gloves

Standard split leather cowhide; orange canvas back; 3" safety cuff; wing thumb

| | |
|----------|----------------|
| GWLPSPG1 | Large, 12/pack |
| GWLPSPGX | XL, 12/pack |



ProWorks® Leather Palm Gloves

Standard split leather cowhide; striped cotton/polyester back, 2.5" safety cuff; wing thumb

| | |
|---------|---|
| GWLPEG1 | Red/blue with gray palm; one size; 12/pack |
| GWLDBP1 | Blue/yellow with green/gray double layer palm, thumb, and index finger; one size, 12/pack |



ProWorks® Standard Split Cowhide Leather Welder's Gloves

Jersey lining; gauntlet cuff; wing thumb

| | |
|----------|-----------------------------|
| GWGLWLD1 | One size; 1 pair or 12/pack |
|----------|-----------------------------|



ProWorks® Driver's Gloves

Keystone thumb; shirred elastic wrist

| | |
|-----------------|------------------------|
| GWGLDR1-(SIZE) | Cowhide; S-XL; 12/pack |
| GWPSLDR1-(SIZE) | Pigskin; S-XL; 12/pack |

Coated Gloves



Textured Blue Latex Palm Coated Gloves

Gray/blue; knit wrist; heavy latex; textured palm and fingers

| | |
|---------------|---------------|
| CLS007-(SIZE) | S-XL, 12/pack |
|---------------|---------------|



Textured Black Latex Palm Coated Gloves

Hi-vis yellow cotton/polyester shell with textured black latex coating; 10 gauge; elastic wrist

| | |
|---------------|---------------|
| 4729HY-(SIZE) | M-XL, 12/pack |
|---------------|---------------|



Textured Black Latex Palm Coated Gloves

Nylon/poly glove with latex coating; extremely comfortable for long wear

| | |
|---------------|----------------|
| 4779RD-(SIZE) | S-2XL, 12/pack |
|---------------|----------------|



Nitrile Foam Coated Gloves

Dark gray with black coating for grip; gray nylon knit shell

| | |
|--------------|---------------|
| 97480-(SIZE) | S-XL, 12/pack |
|--------------|---------------|



Full Latex Coated Waterproof Gloves

13 gauge orange nylon shell with full latex waterproof coating and black sandy foam latex palm dip; elastic wrist

| | |
|-------------|----------------|
| RWG18(SIZE) | S-2XL, 12/pack |
|-------------|----------------|

Mechanic's Gloves



DEWALT® Performance Mechanic's Gloves

Protected knuckles and TPR impact guards for back of hand protection; tacky silicone fingertip grips

| | |
|--------------|--------------|
| DPG780(SIZE) | L-XL; 1 pair |
|--------------|--------------|



High Dexterity Mechanics Gloves

Black; adjustable Velcro® closure; full fingertip and knuckle protection; padded palm

| | |
|-------------|----------------------|
| 99444(SIZE) | Black, XS-2X, 1 pair |
|-------------|----------------------|

PPE AND SAFETY

Cut Resistant Gloves



Polyurethane Glove

Gray; seamless knit shell; silicone free

720DGU-(SIZE) S-2X; 1 pair or 12/pack



Foam Nitrile Palm Coated Glove

Silica-infused fiber wrapped with Kevlar® fiber

GL-C4FN-(SIZE) S-XL; 1 pair or 12/pack



Axis™ Nitrile-Dipped HPPE Gloves

13 gauge High Performance Polyethylene (HPPE); foam nitrile palm dip

RWG555-(SIZE) M-2X; 1 pair or 12/pack



TenActiv™ Anti-Impact Hi-Viz Glove with Micropore Nitrile Grip

13 gauge cut protection; TPR impact guards protect back of hand; ANSI puncture level 5

SGWSTAGYPNVB/(SIZE)* Sizes 6-12; 1 pair



Insulated Nitrile Coated HPPE Glove

13 gauge high performance HPPE; 7 gauge acrylic insulated liner

RWG604-(SIZE) M-XL; 1 pair

Cotton Gloves



ProWorks® String Knit Gloves

Medium weight cotton/poly; knit wrist

GWSKG-L One size, gray, 12/pack or 25 dozen/case



ProWorks® PVC Dotted String Knit Gloves

Medium weight cotton/poly; PVC dots for grip

GWSKDB1 One-sided dots; 12/pack or 25 dozen/case

GWSKDB2 Two-sided dots; 12/pack or 25 dozen/case



ProWorks® Brown Jersey Gloves

Cotton/poly

GWJBSW-1 One size; knit cuff; 12/pack or 25 dozen/case

GWJBLSW-1 One size; 14 oz. red fleece lining; 12/pack or 12 dozen/case

Winter Gloves

REFLECTIVZ® Thermal Lined Gloves

Polyester knit wrist
Keeps out dust and debris

Hi-Visibility
Wind/Water
Resistant Shell
Provides
comfortable fit

Reflective
Knuckle Strap
For low visibility
conditions

Waterproof Plated Palm
Provides a slip-free grip in
all weather conditions

RIRWG800

M-XL, 1 pair or 6 pairs/case



Nitrile Coated Terry Lined Glove

15 gauge fully nitrile coated; 7 gauge heavy terry liner; waterproof

F4782-(SIZE) M-XXL, 1 pair or 12 pairs/pack



Arctic Tuff Heavy Thermal Lined Gloves

7 gauge acrylic insulated liner; high visibility shell with latex coated palm and elastic wrist

GW4789LG-(SIZE) M-XL, 1 pair or 12 pairs/pack



Premium Grade Grain Pigskin Gloves

Protective knuckle strap and elastic wrist; 3M™ Thinsulate™ lining; water resistant

GW1555 Large, 1 pair or 12/pack



DEWALT® Wind/Water Resistant Glove

Cinch pull strap for secure fit; breathable waterproof liner; 40g Thinsulate™ thermal liner

DPG748-(SIZE) L-XL, 1 pair



N-Ferno® Hand Warming Packs

Expose to air to activate; warms up to 8 hours

16990 40 packs/box

* Denotes item available through drop-ship

PPE AND SAFETY

Breathing Protection



ProWorks® N95 Disposable Particulate Respirator

White, double-strapped respirators; adjustable metal nose piece; inner foam for a custom seal

| | |
|--------|---------------------------------|
| HY8710 | No Valve, 20/box, 12 boxes/case |
| HY8812 | Valve, 10/box, 12 boxes/case |



Moldex® AirWave® 4200 Series N95 Respirator

Easy breathing wave design; ideal replacement for more costly valved respirators

| | |
|---------|----------------------|
| 0042N95 | 10/box, 8 boxes/case |
|---------|----------------------|



Moldex® AirWave® 4800 Series N95 Respirator

SmartStrap® adjustable strap; easy breathing wave design

| | |
|---------|----------------------|
| 0084N95 | 8/box, 10 boxes/case |
|---------|----------------------|



ProWorks® Disposable Dust Mask

Single strap and metal nose piece; not NIOSH approved

| | |
|--------------|------------------------------|
| BP-N1000 | White, 50/box, 20 boxes/case |
| BP-N1000-LTC | White, 50/box, 4 boxes/case |



Moldex® 2310 N99 Welding Respirator

N99 protection against particulate aerosols;

| | |
|---------|---------------------|
| 0132N99 | 10/bag, 6 bags/case |
|---------|---------------------|



Moldex® Pre-Assembled Paint Spray and Pesticide Respirator

Includes facepiece, one pair each of organic vapor cartridges, R95 pre-filters, and pre-filter retainers

| | |
|---------|---------------------------------|
| 2717 | Medium, 1 each |
| 3717 | Large, 1 each |
| 0017 | Organic vapor cartridge, 1 pair |
| 59R0798 | R95 pre-filter, 5 pairs/pack |



Moldex® 7940 P100 Assembled Respirator

Pre-assembled mask with filter disks; HEPA filter protects against asbestos, lead, inorganic arsenic, and cadmium

| | |
|------|---------------------------|
| 2497 | Medium; 1 each |
| 3497 | Large; 1 each |
| 0497 | P100 filter disks; 1 pair |

Hearing Protection



Foldable Ear Muffs

NRN 34 dB; folds up for storage; lightweight

| | |
|-------|-------------------------|
| 1437Y | 1 size fits all; 1 each |
|-------|-------------------------|



Radians® Cap Mount Earmuff

Adjustable headband with side wire guides; universal design; NRN 26 dB

| | |
|----------|------------|
| RICMT26* | 1 pair/box |
|----------|------------|



Radians® 430-EHP Electronic Earmuff

Amplifies sound; when sound levels exceed 86 dB, electronic circuit automatically protects at NRN 26 dB

| | |
|------------|------------|
| RI430/EHP* | 1 pair/box |
|------------|------------|



Deviator® Disposable Earplugs

Bright orange foam earplugs; NRN 33 dB; individually bagged

| | |
|------|--|
| FP80 | Uncorded, 200 pairs/box, 10 boxes/case |
| FP81 | Corded, 100 pairs/box, 10 boxes/case |



Moldex® Sparkplugs®

NRN 33 dB; colorful and comfortable foam earplugs

| | |
|-------|--|
| 4066 | Uncorded; 200 pairs/box, 10 boxes/case |
| 4566 | Corded; 100 pairs/box, 10 boxes/case |
| K4466 | Plugstation, uncorded, 250 pairs/station, 2/case |
| 5466 | Plugstation, uncorded, 500 pairs/station, 4/case |



Moldex® Glide™ Earplugs

Unique multi-curved stem rotates for a custom fit; large handle on stem for easy insertion and removal; soft triple-flange plug can be washed and reused; NRN 27 dB

| | |
|------|--|
| 5446 | Glide Trio - Triple-flange with cord; 50 pairs/box, 4 boxes/case |
|------|--|



Radians® Radband 2 Banded Earplugs

Soft ergonomic pods with lightweight, curved band; NRN 25 dB

| | |
|--------------|---|
| RIRB2100* | Orange band, orange pods; 1 band + 1 pair replacement pods/box; 10 boxes/case |
| RIRB2120* | Yellow band, orange pods; 1 band + 1 pair replacement pods/box; 10 boxes/case |
| RIFP-PODBAG* | Replacement pods - 1 pair/box, 10 boxes/case |

* Denotes item available through drop-ship

PPE AND SAFETY

Cooling Products



Chill-Its® Cooling Towel

Run under cold water for 1 minute, re-wet to reactivate; machine washable

| | |
|-------|---------------------------|
| 12420 | Blue, 13" x 29.5", 1 each |
|-------|---------------------------|



Arctic Radwear® Cooling Towel

Soak in water to activate; super evaporative; antimicrobial treated; stays cool for up to 5 hours

| | |
|-------|-----------------------------|
| RCS50 | Blue, 26" x 8.25", 12/pack |
| RCS51 | Green, 26" x 8.25", 12/pack |



Chill-Its® Cooling Bandana

Soak in water to activate; stays cool for up to 4 hours; reusable

| | |
|-------|----------------------|
| 12301 | Lime Green, 12/pack |
| 12305 | Red Western, 12/pack |
| 12307 | Blue, 12/pack |

Hydration



Sqwincher® Powder Pack®

Yields 2.5 gallons - just add water

| | |
|-----------|---------------------|
| 016041-OR | Orange; 32/case |
| 016043-LL | Lemon-Lime; 32/case |
| 016044-AS | Assorted; 32/case |



Sqwincher Lite® QwikStik® Powder Concentrate

Add contents to water bottle - yields 20 oz.; sugar-free and calorie-free

| | |
|-----------|----------------------|
| 060106-LL | Lemon-Lime; 50/pack |
| 060101-MB | Mixed Berry; 50/pack |
| 060100-OR | Orange; 50/pack |



Igloo® Industrial Water Coolers

HDPE outer hide; white FDA grade liner; Ultratherm® insulation for maximum cold retention

| | |
|-----------|------------------|
| LGIGL431* | 3 gallon; 1 each |
| LGIGL451* | 5 gallon; 1 each |



Sqwincher® Squeeze Pops

Assorted flavors, including lemon lime, cherry, mixed berry, orange, and grape

| | |
|-----------|----------|
| 159200201 | 150/case |
|-----------|----------|



Potable Water Cooler Tape

Visible green tape with identifying message; 2" x 55 yards; seals approximately 38 ten gallon water coolers

| | |
|-------------|--------|
| ACCUKWC100* | 1 roll |
|-------------|--------|



Non-Potable Water Sign

Keep workers alert of non-potable water in the immediate work area; available in 3 sizes: 7" x 10", 10" x 14", and 14" x 20"

| | |
|----------------|--------|
| ACCUMCAW124VP* | 1 each |
|----------------|--------|



Potable Water Cooler Label

Warns drinker that tampering with cooler is prohibited; 7" x 6"

| | |
|-------------|----------------|
| ACCUKWC106* | 25 labels/pack |
|-------------|----------------|



"Are You Properly Hydrated?" Adhesive Labels

Inform your team the risks of dehydration; adhesive dura vinyl; available in sizes 3.5" x 5" and 5" x 7"

| | |
|-----------------|--------|
| ACCULRST506XVE* | 1 each |
|-----------------|--------|

PPE AND SAFETY

Ergonomic Products



Pyramex® Knee Pads

Smooth hard cap with nickel plated grommets; antibacterial treatment; foam padding

| | |
|-----------|---------------------|
| PXBKP200* | Black/Black, 1 pair |
|-----------|---------------------|



DuraWear® Knee Pads

Double hook-and-loop straps

| | |
|---------|---------------------|
| LB1921* | Black/White, 1 pair |
|---------|---------------------|



Pyramex® Hi-Vis Back Support

Adjustable and detachable suspenders; orange color for high visibility; breathable and comfortable

| | |
|-----------------|----------------------------|
| PXBBS400(SIZE)* | Orange/Black, S-3X, 1 each |
|-----------------|----------------------------|



DuraWear® Back Support

Adjustable suspenders with smooth glide adjustable clips; tapered for better fit

| | |
|----------------|---------------------------|
| LB1909/(SIZE)* | Black/Black, S-5X, 1 each |
|----------------|---------------------------|

Fall Protection



3M PROTECTA® Compliance in a Can™

Includes 5 point harness, 5/8" rope grab with 2' shock absorber, and 5/8", 50' blend rope lifeline with attached snap hook

| | |
|------------|--------|
| UA2199803* | 1 each |
|------------|--------|



3M Protecta® Shock Absorbing Lanyard

Pack Style, durable, energy absorbing lanyard with 1.75" polyester webbing

| | |
|------------|--------|
| UA1340180* | 1 each |
|------------|--------|



3M PROTECTA® PRO Construction Style Harness

Integrated comfort padding on shoulders and hip
Built-in indicators for easy inspection; integral lanyard keeper, tongue buckle body belt with hip pads, and back and side D-rings for positioning; Capacity 420 lbs.

| | |
|------------|-------------|
| UA1191209* | M/L; 1 each |
| UA1191210* | XL; 1 each |



3M SALA® ShockWave2™ Shock Absorbing Lanyard

Stretchable lanyard incorporates a unique core that immediately begins to extend and absorb energy during a fall, limited arresting forces to an average of 900 lbs.; expands to 6' and retracts to 4.5' in reaction to movements reducing falls and trips

| | |
|------------|---|
| UA1244306* | Single leg lanyard with self-locking steel snap hooks both ends; 1 each |
| UA1244412* | Twin leg lanyard with self-locking snap hook and 2.5" gate flat steel hooks at leg ends; 1 each |



3M Protecta® FIRST™ Vest Style Harness

5 point adjustment, back D-rings and pass-through or tongue buckle straps; corrosion resistant hardware made of zinc plated steel; 310 lb. capacity

| | |
|------------|---------------------------------------|
| UAAB17530* | Pass through legs; universal; 1 each |
| UAAB17550* | Tongue buckle legs; universal; 1 each |



3M Rebel™ Self-Retracting Lifelines

Safer than traditional lanyards due to retractable technology to ensure falls are stopped within a few inches; swiveling anchorage ring; maximum resting force of 900 lbs. and support capacity of 420 lbs.

| | |
|------------|-------------|
| UA3590500* | 33'; 1 each |
| UA3590550* | 50'; 1 each |

HI-VIS SAFETY APPAREL

T-Shirts and Sweatshirts

Max-Dri™ Moisture Wicking T-Shirts

100% polyester bird's eye mesh with reflective stripes, one left chest pocket

| | |
|---------------------|-------------------------------------|
| RIST11-2PGS-(SIZE)* | Yellow, Class 2, Short Sleeve, M-5X |
| RIST11-2POS-(SIZE)* | Orange, Class 2, Short Sleeve, M-5X |
| RIST21-3PGS-(SIZE)* | Yellow, Class 3, Long Sleeve, M-5X |
| RIST21-3POS-(SIZE)* | Orange, Class 3, Long Sleeve, M-5X |

Max-Dri™ Moisture Wicking T-Shirts With Black Bottom

100% polyester bird's eye mesh with reflective stripes, one left chest pocket

| | |
|----------------------|-----------------------------|
| ST11B-2PGS-(SIZE) | Class 2, Short Sleeve, M-5X |
| RIST21B-3PGS-(SIZE)* | Class 3, Long Sleeve, M-5X |

Class 3 Hivizgard™ T-Shirt

100% wicking polyester with contrasting stripe; one left chest pocket

| | |
|-------------------|--------------------|
| LBC16614G/(SIZE)* | Short Sleeve; M-4X |
|-------------------|--------------------|

50/50 Cotton/Poly T-Shirt

5.5 oz.; safety green and safety orange are compliant with ANSI/ISEA 107-2015 high visibility standards for background color

| | |
|------------|--------------------|
| SANPC55* | Short Sleeve; S-6X |
| SANPC55LS* | Long Sleeve; S-6X |

Class 3 Sweatshirt

Mesh lined hood with adjustable pull cords; black elastic knit waistband and cuffs

| | |
|---------------------|----------------|
| SJ01-3ZGS-(SIZE) | Zip-Up, S-5X |
| RISJ02-3PGS-(SIZE)* | Pullover, S-5X |

Class 3 Hi-Vis Full Zip Sweatshirt

Heavy weight 10 oz. polyester fleece; water repellent shell treatment; black bottom and cuffs to help hide dirt; two front hand warming pockets and one zippered left chest pocket

| | |
|------------------|------|
| 323-1370B-(SIZE) | M-3X |
|------------------|------|

Fleece Sweatshirts

9 oz., 50/50 cotton/poly fleece; safety green and safety orange are compliant with ANSI/ISEA 107-2015 high visibility standards for background color

Crewneck

| | |
|----------|------|
| SANPC90* | S-4X |
|----------|------|

Hooded

| | |
|------------|----------------|
| SANPC90ZH* | Full Zip, S-4X |
| SANPC90H* | Pullover, S-4X |

Accessories

GloWear® Hi-Vis Ranger Hat

Mesh venting panels; 1" reflective stripe with orange trim; wide brim and drawstring

| | |
|--------------|------------------------|
| EG232(SIZE)* | S/M, L/XL, and 2XL/3XL |
|--------------|------------------------|

GloWear® Hi-Vis Mesh Neck Shade

Polyester mesh; reflective stripe with contrasting background; elastic design fits most hard hats; plastic clips

| | |
|----------|------------------|
| EG29053* | One size; 1 each |
|----------|------------------|

Class E Mesh Pants

Polyester mesh; drawstring waist with elastic back and ankles

| | |
|-------------------|--------------------------|
| LBC16925G/(SIZE)* | M/L, XL/2X, 3X/4X, 5X/6X |
|-------------------|--------------------------|

Class E Mesh Pants

Polyester mesh; drawstring waist with elastic back and ankles

| | |
|---------------------|----------------------------------|
| RISP61-EPGS-(SIZE)* | Green; M/L, XL/2X, 3X/4X, 5X/6X |
| RISP61-EPOS-(SIZE)* | Orange; M/L, XL/2X, 3X/4X, 5X/6X |

HI-VIS SAFETY APPAREL

Class 2 Safety Vests

Black Bottom Safety Vest



Pockets
Outer: 1
Inner: 0

C16002QGB-(SIZE): Green/Black

- 100% polyester mesh
- Zipper closure
- Type R, Class 2
- Sizes M-4X

Mesh Safety Vest



Pockets
Outer: 0
Inner: 0

SVGM-(SIZE): Green, Mesh

- 100% polyester mesh
- Two-tone trim
- Hook and loop closure
- Type R, Class 2
- Sizes M-4X

Solid Safety Vest



Pockets
Outer: 3
Inner: 0

SVGS-(SIZE): Green, Solid

- 100% polyester
- Two-tone trim
- Hook and loop closure
- Type R, Class 2
- Sizes M-4X

Two Tone Trim Safety Vest



Pockets
Outer: 5
Inner: 3

SV22-2ZGM-(SIZE): Green

RISV22-2ZOM-(SIZE)*: Orange

- 100% polyester mesh
- Two-tone trim
- Zipper closure
- Type R, Class 2
- Sizes M-5X

Multipurpose Surveyor's Vest



Pockets
Outer: 3
Inner: 1

SV27-2ZGM-(SIZE): Green

- 100% polyester mesh
- Zipper closure
- Type R, Class 2
- Sizes M-4X

Surveyor's Safety Vest



Pockets
Outer: 5
Inner: 3

RISV6G(SIZE)*: Green

RISV6O(SIZE)*: Orange

- 100% polyester solid front and mesh back
- Two-tone trim
- Zipper closure
- Type R, Class 2
- Sizes S-5X

Solid Front/Mesh Back Vest



Pockets
Outer: 1
Inner: 1

PXRVHL2710(SIZE)*: Green

PXRVHL2720(SIZE)*: Orange

- 100% polyester solid front, mesh back
- Two-tone trim
- Breakaway hook and loop shoulders, sides, and front closure
- Type R, Class 2
- Sizes M-5X

Breakaway Surveyor's Vest



Pockets
Outer: 3
Inner: 2

RISV24-2ZGM-(SIZE)*

- 100% polyester mesh
- Expandable waist with adjustable sides
- Five-point breakaway at shoulders, sleeve, and sides; Zip-N-Rip™ zipper closure
- Dual mic tabs on shoulders
- Type R, Class 2
- Sizes M/L, XL/2X, and 3X/5X

Class 3 Safety Vests

Mesh Safety Vest



Pockets
Outer: 3
Inner: 0

SV22-3ZGM-(SIZE): Green

RISV22-3ZOM-(SIZE)*: Orange

- 100% polyester mesh
- Zipper closure
- Type R, Class 3
- Sizes M-5X

Surveyor's Safety Vest



Pockets
Outer: 4
Inner: 3

RISV63G(SIZE)*: Green

RISV63O(SIZE)*: Orange

- 100% polyester solid front and mesh back
- Zipper closure
- Type R, Class 3
- Sizes S-5X

Breakaway Surveyor's Vest



Pockets
Outer: 2
Inner: 2

RISV24-3GM-(SIZE)*

- 100% polyester mesh
- Expandable waist with adjustable sides
- Five-point breakaway at shoulders, sleeve, and sides
- Type R, Class 3
- Sizes M/L, XL/2X, and 3X/5X



Add your company logo to any of these safety vests!

Ask your CCP Area Manager for details.

* Denotes item available through drop-ship

HI-VIS SAFETY APPAREL

Hi-Vis Rainwear



Heavy Duty Rip Stop Waterproof Rainwear

Reflectivz™ waterproof and hi-vis technology; 2" 3M® silver reflective tape

Jacket: Zipper closure with snap closure storm flap; attached hood; two mic tabs; 2 lower front pockets, flap-covered chest pocket, fleece lined inside pocket

Pants: Hook-and-loop closure over zipper fly; removable elastic suspenders; side cargo pocket; knee-high leg zipper and pockets for optional knee pad inserts

| | |
|---------------------|-------------------------|
| RIRW32-3Z1Y-(SIZE)* | Class 3 Jacket, M-5X |
| RIRW32-EZ1Y-(SIZE)* | Class E Pants, M-5X |
| RIRW-KP* | Knee Pad Insert, 1 pair |

Fortress™ 35 High Visibility Rainwear

.35 mm PVC Cotton/poly, self extinguishing;

Jacket: ETP™ collar: extended in back, tapered in front; detachable hood (included)

Overalls: elastic straps, fly front, and reinforced crotch

| | |
|---------------------|----------------------------|
| RIRJ07-3ZGV-(SIZE)* | Class 3 Jacket, M-5X |
| RIRB07-ESGV-(SIZE)* | Class E Bib Overall, M-5X |
| RIRC07-3ZGV-(SIZE)* | Class 3 48" Raincoat, M-3X |

General Purpose High Visibility Rainwear

300 denier PU coated hi-viz oxford material with reflective stripes

Jacket: zippered closure with snap closure storm flap, detachable hood, various pockets throughout

Pants: front hook-and-loop fly closure; adjustable shoulder straps and side waist zipper expansion

| | |
|---------------------|---------------------------|
| RIRW30-3Z1Y-(SIZE)* | Class 3 Jacket, M-5X |
| RIRW30-ES1Y-(SIZE)* | Class E Bib Overall, M-5X |



Fortress™ 20 High Visibility Rainwear

20mm PVC/nylon high visibility material;

Jacket: ETP™ Collar: extended in back, tapered in front; detachable hood (included); hook-and-loop adjustable cuffs

Pants: elastic waist; detachable suspenders, and pass-through side pockets

| | |
|---------------------|----------------------|
| RIRJ25-3ZGV-(SIZE)* | Class 3 Jacket, M-5X |
| RIRP25-EZGV-(SIZE)* | Class E Pants, M-5X |



High Visibility Rainwear

150 denier PU-coated oxford material; 2: silver reflective tape

Jacket: detachable hood; zipper closure with snap storm flap; two lower flap-covered front pockets

Pants: Elastic waist, slash pockets, and adjustable cuffs with snaps

| | |
|---------------------|----------------------|
| RIRW10-3S1Y-(SIZE)* | Class 3 Jacket, M-5X |
| RIRW10-ES1Y-(SIZE)* | Class E Pants, M-5X |



Durawear Class 3 Three-Piece High Visibility Rain Suit

Oxford fabric with polyurethane coating, includes, jacket, bib overall pants and detachable hood

| | |
|----------------|------|
| LB1350/(SIZE)* | S-5X |
|----------------|------|



Class E Hi-Visibility Rain Pants

300 denier polyester oxford with water resistant PU coating; elastic waist with drawstring; 2" silver reflective tape; adjustable ankle snaps

| | |
|-------------------|--------------|
| LBC16920G/(SIZE)* | Green, M-3X |
| LBC16920F/(SIZE)* | Orange, M-3X |



Class E Sealed Waterproof Safety Pants

300 Denier yellow oxford with reflective stripes; full elastic waist; leg snaps and slash pockets

| | |
|---------------------|--------------------------|
| RISP41-EPGS-(SIZE)* | M/L, XL/2X, 3X/4X, 5X/6X |
|---------------------|--------------------------|

* Denotes item available through drop-ship

HI-VIS SAFETY APPAREL

Hi-Vis Outerwear



Class 3 Weatherproof Quilted Bomber Jacket

PU-coated Oxford polyester weatherproof shell; perma-lined quilted liner; concealed attached hood; dual mic tabs; zippered pockets; elastic waistband and wrist cuffs

| | |
|-------------------|----------------------------------|
| SJ11Q-3ZGS-(SIZE) | M-4X; 5X available via drop-ship |
|-------------------|----------------------------------|



Class 3 Quilted Multi-Colored Weatherproof Bomber Jacket

Multi-colored polyurethane coated weatherproof 300D oxford polyester shell; perma-lined quilted liner; concealed attached hood; 3D flap-covered cell phone/radio chest pocket; mic tabs on both shoulders

| | |
|------------------|----------------------------------|
| SJ12-3ZMS-(SIZE) | M-4X; 5X available via drop-ship |
|------------------|----------------------------------|



Class 3 Two-In-One Weatherproof Bomber Jacket

Polyurethane coated polyester weather resistant shell; zip out removable fleece liner with lined sleeves; mic tabs and multiple pockets

| | |
|--------------------|----------------------------------|
| SJ110B-3ZGS-(SIZE) | M-4X; 5X available via drop-ship |
|--------------------|----------------------------------|



Class 3 Three-In-One Weatherproof Parka

Polyurethane coated oxford polyester weatherproof shell; removable inner fleece lined jacket with lined sleeves; mic tabs and multiple pockets

| | |
|--------------------|---|
| SJ410B-3ZGS-(SIZE) | M-3X; 4X and 5X available via drop-ship |
|--------------------|---|



Class 3 Waterproof Lined Jacket

Insulated quilted nylon lining; 2" silver reflective tape; storm flap with zipper and snap closure; elastic storm cuffs; pack-away adjustable hood; one cell phone pocket concealed under storm flap, two lower pockets with flap, and one internal pocket

| | |
|--------------------|--------------------|
| PRTUS466YB-(SIZE)* | Yellow/Black, S-5X |
| PRTUS466YN-(SIZE)* | Yellow/Navy, S-5X |



Class 3 Quilt Lined Waterproof Coverall

2" silver reflective tape; storm flap with two-way zipper; mic tab; one cell phone pocket with storm flap, two chest pockets with zippers, and two lower pockets with flaps

| | |
|-------------------|-------------------|
| PRTS485YN-(SIZE)* | Yellow/Navy, M-6X |
| PRTS485ON-(SIZE)* | Orange/Navy, M-5X |



Class E Waterproof Bib Overall

2" silver reflective tape; side waist button expansion, adjustable straps; upper chest patch pocket with one cell phone, two side pass-through openings, one patch pocket with flap and one double rule pocket on the back; Side zipper leg opening for easy access (PRTUS489 only)

| | |
|-----------------|-------------------|
| PRTS488-(SIZE)* | Unlined; S-3X |
| PRTS489-(SIZE)* | Quilt Lined; S-3X |



Class E Water Resistant Thermal Pants

Polyurethane coated weather resistant 300D oxford polyester shell; elastic waist with drawstring; adjustable ankle snaps

| | |
|-------------------|--------------------------|
| LBC16921G/(SIZE)* | M/L, XL/2X, 3X/4X, 5X/6X |
|-------------------|--------------------------|

* Denotes item available through drop-ship

FACILITY AND SAFETY SUPPLIES

First Aid Kits



Class A First Aid Kit

Complies with ANSI/ISEA Z308.1-2015 Class A minimum fill requirements

2018FAK-A Poly White, 1 each



Class B First Aid Kit

Complies with ANSI/ISEA Z308.1-2015 Class B minimum fill requirements

2018FAK-B Metal Kit, 1 each



Class B Three-Shelf Metal First Aid Kit

Complies with ANSI/ISEA Z308.1-2015 Class B minimum fill requirements

2019FAK-B Metal Kit, 1 each

ProWorks® First Aid Kits

Kit includes bandages, gauze, adhesive tape, antiseptic, cold pack, scissors, soothing sting swabs, burn cream, and cut cleaner

| | |
|---------|-----------------------|
| 2167FAK | 10-person kit; 1 each |
| 2166FAK | 25-person kit; 1 each |
| 2107FAK | 50-person kit; 1 each |

First-Step® Blood Spill Cleanup Kit

For safe containment and cleanup of blood splatters/spills and to decontaminate exposed hard surfaces; one-time use

FSSK12 12 kits/case

Eyewash



16 Gallon Eye Wash Station

Wall mountable, delivers 15 minute flow

| | |
|--------|---|
| 2170FA | 1 each |
| 2174FA | Replacement water additive; 8 oz., 1 each |



16 oz. Eye Wash Station

Wall mountable, includes two 16 oz. bottles

| | |
|--------|-----------------|
| 2172FA | 1 each |
| 2173FA | Refills, 1 each |

Skin Protection



Bug Repellent with DEET

Provides protection from mosquitoes and biting insects; available in spray or disposable wipes

| | |
|------------|---|
| CS505-212* | 25% DEET; 2 oz. spray bottle, 6/case |
| CS506-260* | 30% DEET; 5" x 8" wipes, 25/box, 3 boxes/case |
| CS213-017* | 30% DEET; 5" x 8" wipes, 50/box, 3 boxes/case |



Fly Away Insect Wipes

Provides up to 4 hours of protection from mosquitoes, black flies, stable flies, sand flies, gnats, chiggers, fleas, and ticks; wipes allow for quick application to skin, hair, and clothing; 25% DEET

ATH1541* 40 wipes/canister, 6 canisters/case



Deb® SunProtect™ Sunscreen

Broad spectrum SPF 30 sunscreen; perfume-free

| | |
|----------|-------------------------------------|
| AE-L1NUS | 1 Liter cartridge, 1 each or 6/case |
| SDL1NUS | Dispenser for 1 L cartridge; 1 each |
| LM001NUS | 100 mL tube; 12/case |

Brooms and Vehicle Brushes



Medium Weight Floor Broom

3" polypropylene bristles

| | |
|-------------|-------------|
| LGBWK20624* | 24", 1 each |
| LGBWK20636* | 36", 1 each |



Heavy Duty Street Broom

6¼" polypropylene bristles

| | |
|-------------|-------------|
| LGBWK73160* | 16", 1 each |
|-------------|-------------|



Handle Braces

| | |
|-----------|---|
| LGBWK119* | Large, fits 24-48" floor sweeps; 1 each |
| LGBWK120* | Small, fits 18-48" floor sweeps; 1 each |



Vehicle Brush

2.5" trim

| | |
|------------|----------------------|
| LGBWK8410* | Polystyrene; 1 each |
| LGBWK8420* | Dual-surface; 1 each |



Broom and Brush Handles

| | |
|-----------|--|
| LGBWK121* | 54", threaded wood tip, 15/16" diameter; 1 each |
| LGBWK136* | 60", threaded metal tip; 15/16" diameter; 1 each |
| LGBWK137* | 60", threaded wood tip; 1 1/8" diameter; 1 each |

* Denotes item available through drop-ship

FACILITY AND SAFETY SUPPLIES

Tape



Pro-Grade Duct Tape

9.5 mil; sticks in high and low temperatures

397145 2" x 60 yds; 1 roll or 24 rolls/case



Blue Painter's Tape

6 mil; UV resistant; 14 day hold with clean removal

397146 2" x 60 yds; 1 roll or 24 rolls/case



Masking Tape

397137 2" x 60 yds, 24 rolls/case

397133 3" x 60 yds, 16 rolls/case

Safety Cones and Caution Tape



Collapsible Safety Cones

6" (top) and 4" (bottom) reflective collars; meets federal MUTCD regulations for traffic and channeling devices

TCF28DW-REF-46 Orange, 28" Tall, 1 each or 6/case

TCF-FL Optional Light, 1 each



Safety Traffic Cones

Tough all-weather safety cones, 100% PVC; meets federal MUTCD and NCHRP-350 D Specifications

TC18DW Orange, 18" Tall, 1 each

TC28DW Orange, 28" Tall, 1 each

TC28DW-REF46 Orange, 28" Tall, 4" and 6" reflective collars, 1 each



Caution Barricade Tape

Compliant under OSHA standards 1910-144(a) for physical standards

TBT3000C 3" x 1000', 3.0 mil; 12/case

Flashlights and Batteries



7 LED Rubber Flashlight

31 lumens; 8 hour run time; two D batteries (included); rubberized for grip and durability

PRTPA60* 1 each



19 LED Utility Flashlight

74 lumens; 8 hour run time; four D batteries (included); wall mountable for easy access

PRTPA62* 1 each



Dual Power Head Lamp

100 lumens; 8 hour run time; three AAA batteries (included); high, medium, and flash settings; tilt control

PRTPA63* 1 each



Duracell® Procell® Alkaline Batteries

Long shelf life; rated for reliable operation in temperatures from -4°F to 129°F

LGDURPC2400BKD* AAA, 24/box

LGDURPC1500BKD* AA, 12/box

LGDURPC1400* C, 12/box

LGDURPC1300* D, 12/box

LGDURPC1604BKD* 9V, 12/box

Can Liners



Linear Low Density Can Liners

Black; stretch; heavy weight

2153815 60 gallon, 1.5 mil; 38" x 58", 100/case

2153817 60 gallon, 2 mil; 38" x 58", 100/case

2153303 42 gallon, 3 mil; 33" x 48", 32/roll



High Density Can Liners

Clear, high tensile strength; very little stretch

202433V 16 gallon, 7 micron; 24" x 31", 50/roll, 20 rolls/case

2164016 45 gallon, 16 micron; 40" x 48", 25/roll, 10 rolls/case

2038604 60 gallon, 14 micron; 38" x 60", 25/roll, 8 rolls/case

* Denotes item available through drop-ship



Bench Maintenance Chemicals



Chemworks® Brake Cleaner

Non-chlorinated; VOC compliant; use on all brake parts and CV joints

7811011 12.25 oz. net wt. aerosol, 12/case



Aero® Rust-Free Non-Flammable Lubricant

Penetrating lubricant; displaces moisture; prevents corrosion

456720SA 17 oz. net wt. aerosol, 12/case



Aero® Carburetor Cleaner

Removes upper cylinder deposits and moisture; dissolves gums and varnishes

457520FA 14.75 oz. net wt. aerosol, 12/case



Aero® Red Grease - Gear Grease

Heavy-duty open gear grease; tacky, cohesive, high-temperature and corrosion-resistant; for industrial use

ABR581* 14 oz. net wt. aerosol, 12/case



Total Solutions® Engine Starter

Designed to provide quick engine starts in temperatures down to -65° F, safe to use with both gasoline and diesel powered engines

ATH8550* 11 oz. net wt. aerosol, 12/case



Aero® White Lithium Grease - Chain and Cable Lubricant

Multi-purpose; effective on automotive, marine, and industrial machinery and equipment; long-lasting and rust-preventative

ABR531* 14 oz. net wt. aerosol, 12/case



Zep® High Pressure Lubricant

Designed for high load applications; adheres to surfaces to prevent lubricant squeeze out or spin-off; sprays on as a liquid to penetrate tight areas, then sets up as a gel

10170R 13 oz. net wt. aerosol, 12/case



Total Solutions® Diesel Fuel Anti-Gel

Concentrated anti-gel additive keeps all types of fuel and diesel oils flowing in cold weather; eliminates need for tank heaters

ATH654-(SIZE)* Available in 1 gallon, 5 gallon, and 35 gallon quantities



Zep® Z-Works PTFE Lubricant

Long-lasting penetrating lubricant with PTFE micro-additives; penetrates and loosens rusted parts, displaces moisture, and prevents rust and corrosion

10070R 18 oz. net wt. aerosol, 12/case



Total Solutions® Rust Converter

Instantly bonds with rust and stops its growth; transforms it into a non-rusting paintable surface and prevents future rust formation

ATH346(SIZE)* Available in quart, gallon, and 5 gallon quantities

ATH8346* 13 oz. net wt. aerosol; 12 cans/case

* Denotes item available through drop-ship

CHEMICALS

Degreasers



Orange Solv Plus Citrus Degreaser

Natural solvent; excellent for heavy degreasing; very effective as a lift station degreaser; 100% biodegradable

| | |
|----------|------------------------------|
| 3780-20 | 20 oz. can, 12 cans/case |
| 3780-GAL | 1 gallon jug; 4 gallons/case |



Aero® Solve 400 Degreaser

Removes dirt, grease, oil, and grime from motors and other equipment without disassembly; non-flammable and non-conductive; does not contain oil

| | |
|----------|--------------------------|
| 463220SA | 20 oz. can, 12 cans/case |
|----------|--------------------------|



Aero® Curveball Butyl Degreaser

All-purpose formulation to penetrate and break up oil, grease, and other tough soils; pleasant fragrance

| | |
|----------|-----------------------|
| 653432FA | RTU, 1 quart, 12/case |
|----------|-----------------------|



Zep® Heavy Duty Butyl Degreaser

Premium grade concentrate; contains fast-acting and biodegradable detergents

| | |
|--------|-------------------------------|
| 42880R | Concentrate, 1 gallon, 4/case |
|--------|-------------------------------|

Cleaning



Zep® Truck and Trailer Wash

Rich foam for effective cleaning; biodegradable; highly concentrated; free-rinsing

| | |
|--------|------------------|
| 42080R | 1 gallon, 4/case |
| 53080R | 5 gallon pail |



Chemworks® Great Glass Cleaner

Aerosol can; no-streak foaming formula

| | |
|---------|-------------------------------------|
| 7910012 | Ammoniated; 18 net oz.; 12/case |
| 7915512 | Non-ammoniated; 18 net oz.; 12/case |



Aero® Tire Bright Tire Dressing

Durable; high gloss; water resistant; fast-drying; for use on rubber surfaces - tires, bumpers, seals, moulding, mats

| | |
|----------|-------------------------|
| 642932SA | 1 quart; 12 quarts/case |
|----------|-------------------------|



Salt Rinse

Dissolves salt residue from vehicles and equipment without harming painted or finished surfaces; also effective on floors and carpets

| | |
|---------------|---------------------------------------|
| ATH710(SIZE)* | Available in 1, 5, 30, and 55 gallons |
|---------------|---------------------------------------|



Chemworks Release Agent and Cleaner

Replaces diesel fuel as a cleaner and release agent for road equipment and tools; also effective on plow blades, shovels, and snow thrower intakes and chutes to reduce snow and ice buildup

| | |
|-------------|----------------|
| ABCCP-6-55 | 55 gallon drum |
| WABCCP-6-PL | 5 gallon pail |

Miscellaneous



Total Solutions Graffiti Removers

Biodegradable; safe on hands and skin

| | |
|----------------|--------------------------------------|
| ATH1447-40* | Wipes, 40/canister, 6 canisters/case |
| ATH332-(SIZE)* | 1, 5, 30, or 55 gallons |
| ATH8307* | Gel aerosol, 15 oz. net wt., 12/case |



Zep® Heavy-Duty Powder Concrete Cleaner

Industrial strength powder; dissolves quickly to remove tough embedded soils; wet floor, apply, scrub and rinse

| | |
|--------|-------------|
| 43920R | 40 lb. drum |
|--------|-------------|



Aero® Instant Kill Wasp and Hornet Insecticide

Quick kill; non-conductive; indoor/outdoor use

| | |
|----------|------------------------------|
| 472320PA | 14 oz. net wt., 12 cans/case |
|----------|------------------------------|



Aero® Knock Out II Weed Killer

Non-selective; VOC Compliant

| | |
|-------------|------------------------|
| ABL6299-GL* | 1 gallon jug, 4/case |
| ABL6299-PL* | 5 gallon pail, 1 each |
| ABL6299-55* | 55 gallon drum, 1 each |

* Denotes item available through drop-ship



ACCUFORM® SIGNS AND SAFETY

We offer a full line of safety signs, warning labels, and other products from Accuform. Take care of your company's signage needs today! Contact your Area Manager for more information.



Traffic Control

Inform all road users that they should be prepared to stop ahead. Product offering includes:

- Paddle Slow/Stop signs
- Roll-up and solid construction warning signs
- Cone top warning signs

ACCUFORM® SIGNS AND SAFETY



Build Safety Signs to Suit Your Needs

Create a customer sign with quality durable materials, precision printing. Select your color, material, and add your text and symbol. All signs are made in the USA.



Barricade Tapes, Posts, and Chains

Quickly alert others of potential hazards in the immediate vicinity.



GHS Labels and Signs

Communicate critical information to your employees easily with SDS binders, centers and posters.



Lockout/Tagout

Meets requirements for shutting down equipment and machinery before conducting maintenance or repairs. Available in kits or sold individually.



Hard Hat Decals

Inform others of pertinent information on employees in case of an emergency. Waterproof vinyl labels that conform to the curve of the hat. Can also be effective on machinery, tool boxes and other safety equipment.

EAGLE CABINETS



Safety Cabinets

18 gauge steel; reinforced double wall construction
1.5" air space on sides, top, bottom, back and doors
Four adjustable galvanized leveling legs
Adjustable shelves that hold 350 lbs.
Available in manual or self-closing



Safety Cans

Seamless body cans made in the U.S.A.
Meet OSHA and NFPA Code 30 requirements
UL and ULC listed
FM approved for safe storage and handling
Colors for every use



Spill Containment Platforms

High Density Polyethylene (HDPE) construction for excellent chemical resistance
Removal grating for easy cleaning
Platforms can easily be connected
Different capacities and sizes available
Compatible with Poly Pallet Ramp for easy loading and unloading

SEYMOUR MIDWEST TOOLS

Structron® Safety Tools

Our new Structron® Safety line is an excellent addition to any construction crew looking to increase worker visibility and safety during daylight and nighttime hours.

Like high visibility safety clothing, Structron® Safety tools are safety green and utilize (2) 3M® Series 983 tape accents made of highly retroreflective microprismatic markings, designed to enhance visibility and detection, that meet or exceed all Federal Motor Vehicle Safety Standard 108 requirements, including, DOT - C2 Certification Mark requirements for Reflectivity.



New Structron® Excavator Max Wheelbarrows

Always ready to roll with standard "Flat Free" tires
Contractor-preferred durable all-steel construction



Floor Coating Tools

Wide selection of pro-grade tools and supplies for applying coatings



Spiked Shoes



Rakes (CAM® / Gauge)



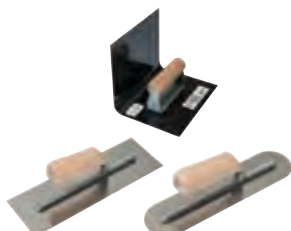
Squeegees



Spiked Rollers



Spreader/Smoother



Trowels



Extension Handles with
Milled Aluminum Threaded Tip



Assurance™ Covers



Mixing Equipment

* Denotes item available through drop-ship

SPILL CONTROL

Sorbents



TaskBrand® Heavy Weight Industrial Pads

Meltblown; large liquid holding capacity; quick cleanup

| | |
|----------|--------------------------------------|
| AS-INB-P | Universal, gray, 15" x 18", 100/Bale |
| OS-INB-P | Oil-only, white, 15" x 18", 100/Bale |



TaskBrand® Heavy Weight Industrial Rolls

Meltblown; perforated every 20" and down center of roll

| | |
|-----------|-------------------------------------|
| AS-INB-R1 | Universal, gray, 30" x 150', 1 each |
| OS-INB-R1 | Oil-only, white, 30" x 150', 1 each |



TaskBrand® Spill Response Pads

Meltblown; quick cleanup

| | |
|----------|--------------------------------------|
| AS-SRB-P | Universal, gray, 18" x 15", 200/bale |
| OS-SRB-P | Oil-only, white, 18" x 15", 200/bale |



TaskBrand® Socks and Booms

Flexible to fit around machinery; great for spill containment

| | |
|-----------|-----------------------------------|
| AS-ACB-S | Universal sock, 3" x 48", 40/case |
| OS-ACB-S | Oil-only sock, 3" x 48", 40/case |
| OS-ACB-B8 | Oil-only boom, 8" x 10', 4/case |
| OS-ACB-B5 | Oil-only boom, 5" x 10', 4/case |



TaskBrand® SureGrip™ Absorbent Adhesive Floor Mat

Adhesive backed commercial floor matting replaces rubber-backed mats and rental mats in entrances, shop areas, or any location where slippery floors could affect the safety of employees, customers, or visitors; absorbs both oil- and water-based liquids

| | |
|---------------|--------------------------|
| AS-SG-34100-G | Gray, 34" x 100', 1 roll |
| AS-SG-3450-G | Gray, 34" x 50', 1 roll |
| AS-SG-34100-B | Blue, 34" x 100', 1 roll |
| AS-SG-3450-B | Blue, 34" x 50', 1 roll |

Spill Kits



TaskBrand® Truck Spill Kits

Contains 20 pads, 2 socks, and 2 clean-up bags; perfect for storing inside truck fleet in case of a spill

| | |
|---------|-------------------|
| AS-SKTK | Universal, 1 each |
| OS-SKTK | Oil-only, 1 each |



TaskBrand® Spill Kits

Each kit contains 1 pair of gloves, 1 pair of safety goggles, and the items listed below

5 Gallon Spill Kits: 10 pads, 3 socks, and 1 clear can liner

| | |
|---------|-------------------|
| AS-SK5G | Universal, 1 each |
| OS-SK5G | Oil-only, 1 each |

20 Gallon Spill Kits: 20 pads, 4 socks, 2 pillows, and 3 clear can liners

| | |
|----------|-------------------|
| AS-SK20G | Universal, 1 each |
| OS-SK20G | Oil-only, 1 each |

30 Gallon Spill Kits: 40 pads, 6 socks, 4 pillows, and 5 clear can liners

| | |
|----------|-------------------|
| AS-SK30G | Universal, 1 each |
| OS-SK30G | Oil-only, 1 each |

65 Gallon Spill Kits: 100 pads, 15 socks, 6 pillows, and 10 clear can liners

| | |
|----------|-------------------|
| AS-SK65G | Universal, 1 each |
| OS-SK65G | Oil-only, 1 each |

Refill kits available for all spill kits above



APPAREL

Rainwear



ERW™ 35 Basic Rainsuit

.35mm PVC/Poly three-piece rainsuit - includes jacket, bib overalls, and hood; snap front closure; lower front pockets with flaps

| | |
|---------------------|------------------------|
| RIRS01-NSYV-(SIZE)* | Three-Piece Suit; M-5X |
|---------------------|------------------------|



Tingley® Storm-Champ® Premium Rain Suit

0.20mm PVC on Nylon; 100% waterproof; jacket and waist pants; attached hood and draw cord

| | |
|-------------------|--------------------------|
| TRCS66211-(SIZE)* | Royal Blue, Sizes S-5X |
| TRCS66218-(SIZE)* | Forest Green, Sizes S-3X |

Drirad™ 28 Durable Rainwear

.28mm PVC/Poly material; snap front closure; lower front pockets with flaps; ETP™ collar extends in back and tapered in front for protection



| | |
|---------------------|------------------------|
| RIRC15-NSYV-(SIZE)* | 48" Coat; M-5X |
| RIRJ15-NSYV-(SIZE)* | Jacket; M-5X |
| RIRB15-NSYV-(SIZE)* | Bib Overall; M-5X |
| RIRH15-NSYV-UNIV* | Hood, one size |
| RIRS15-NSYV-(SIZE)* | Three-Piece Suit; M-5X |



Stormflex Rainwear

.40 mm polyurethane on stretch knit polyester; remains soft and flexible in cold weather and is 100% waterproof; roll-away hood in collar; zipper closure with inner storm fly; pants feature pass-through pockets and elasticized waist with cord

| | |
|-------------------|---------------------|
| J67113-(SIZE) | Jacket, Black; M-2X |
| TRCP67013-(SIZE)* | Pants, Black; M-2X |



Webtex Heavy Duty Rain Suit

65 mil ribbed PVC on polyester; includes jacket, bib overalls, and detachable hood; reinforced crotch area to prevent splitting; underarm vents to keep you cool

| | |
|----------|-------------------|
| OG76017* | Yellow, S-3X |
| OG76018* | Olive Green, S-3X |



Durarad™ 42 Acid Gear Rainwear

0.42mm self-extinguishing PVC on poly; waterproof, provides protection in high-risk environments; hidden snap front closure; ETP™ collar extends in back and tapered in front for protection; SE D6413 tested

| | |
|---------------------|-------------------------|
| RIRJ20-NSKV-(SIZE)* | Green Jacket; M-5X |
| RIRB20-NSKV-(SIZE)* | Green Bib Overall; M-5X |
| RIRS20-NSKV-(SIZE)* | Green Coverall; M-5X |

Footwear



Rubber Knee Boots

16", black; over-the-sock style; steel shank; steel safety toe

| | |
|----------------|-------------------------|
| LB1501/(SIZE)* | Shoe sizes 5-15; 1 pair |
|----------------|-------------------------|



Yellow Rubber Slush Boots

17", over-the-boot style; fabric lined; bar-treated outsole

| | |
|----------------|-------------------------|
| LB1510/(SIZE)* | Shoe sizes 6-18; 1 pair |
|----------------|-------------------------|



TREX™ Ice Traction Device

Heat-treated carbon steel studs for grip and stability; stretchable rubber for good fit and easy on/off

| | |
|-------|------------------------------------|
| 16753 | Medium (shoe sizes 5-8); 1 pair |
| 16754 | Large (shoe sizes 8-11); 1 pair |
| 16755 | X-Large (shoe sizes 11-14); 1 pair |



Boot Brushes With Stand

Brushes on a metal chassis that can be mounted to floor; made with crimped polystyrene fibers

| | |
|-----------|------------------------------|
| MAL35601* | Two brushes and stand, 1 set |
| MAL35602* | Replacement brushes, 2-pack |

* Denotes item available through drop-ship

APPAREL

Outerwear



Original Chore Coat

Brown duck: 100% cotton
Navy and black twill: 65/35 poly/cotton
Heavyweight quilted polyester insulation; available in regular and tall sizes

BACH416* S-6X



Original Quilt Lined Hooded Jacket

100% cotton; 12 oz. sanded duck fabric outer shell; available in 6 colors; available in regular and tall sizes

BAHJ375* S-6X



Insulated Duck and Twill Coveralls

Brown Duck/Black: Heavy duty 100% cotton
Navy Twill: 7.5 oz. 65/35 poly/cotton
Medium weight quilted polyester insulation; available in short, regular, and tall sizes

BAI417* S-6X



Deluxe Insulated Bib Overall

Heavy duty 100% cotton duck; medium weight quilted polyester insulation; short, regular, and tall sizes available in brown duck or black

BAB415* S-6X



Thermal Lined Full Zip Hooded Sweatshirt

Shell: 9 oz. fleece; Thermal lining: 5 oz waffle weave; nylon front zipper, available in 9 colors; tall sizes available

BASZ101* S-6X



Pewter Hooded Jacket

Shell: 8 oz. poly/cotton fleece; Lining: 9 oz. sherpa pile, full front zipper

PRTUKS32* Black, M-2XL



Twill Coveralls

7.25 oz. 65/35 poly/cotton twill; two-way brass zipper; available in 9 colors

RKCT10* Reg 34-58; Long 40-52



Red Kap® Heavyweight Parka

65/35 poly/cotton outer shell; 100% nylon taffeta lining, polyester insulation; zipper front; available in Black and Navy; tall sizes available

RKJP70* S-X



Red Kap® Slash Pocket Jacket

65/35 poly/cotton twill outer shell, polyester lining; zipper front; available in Black, Navy, Spruce Green, Charcoal, and Brown; tall sizes available

RKJT22* S-6X



Red Kap® Perma-Lined Panel Jacket

65/35 poly/cotton twill outer shell, polyester lining; zipper front; available in Black, Navy, Spruce Green, Charcoal, and Brown; tall sizes available

RKJT50* S-6X



Red Kap® Soft Shell Jacket

10.5 oz. poly/spandex soft shell with polyester fleece lining; water- and wind-resistant; full zipper front; available in Black and Navy

RKJP66* S-5X



Port Authority® Three Season Jacket

Nylon shell; heavyweight fleece lining; two-way zipper; available in 8 colors

SANJ354* Men's; XS-6X

SANL354* Ladies's; XS-4X

FR Apparel



Bizweld Flame Resistant Coverall

9.5 oz.; 11.2 cal/cm² (ARC2); NFPA 2112, 70E, ASTM F1506-10a certified; available in Navy, Black, and Orange; regular and tall sizes available vary based on size

PRTUBIZ1* S-6XL



Bizflame 88/12 Shirt

7 oz.; 8.2 cal/cm² (ARC2); NFPA 2112, 70E, ASTM F1506-10a certified; available in Navy and Gray

PRTFR89* M-5XL



Bizweld Cargo Pants

9.5 oz.; 11.2 cal/cm² (ARC2); dual hazard protection; adjustable waist band; NFPA 2112, 70E, ASTM F1506-10a certified; available in Navy & Gray

PRBZ31* S-5XL

APPAREL

T-Shirts, Polos, Sweatshirts



T-Shirts

Many colors available; sizes S-5X

| | |
|----------|--------------------------------------|
| SAN2000* | 100% cotton short-sleeve |
| SAN2300* | 100% cotton short-sleeve with pocket |
| SAN8000* | 50/50 short-sleeve |
| SAN2400* | 100% cotton long-sleeve |

Polo Shirts

Many colors available

| Men's | |
|------------|---------------------------------------|
| SANK540* | 100% polyester short-sleeve, XS-4X |
| SANK420* | 100% cotton pique short-sleeve, XS-6X |
| SANK500* | 65/35 poly/cotton short-sleeve, XS-6X |
| SANK500LS* | 65/35 poly/cotton long-sleeve, XS-6X |
| Women's | |
| SANL540* | 100% polyester short-sleeve, XS-4X |
| SANL420* | 100% cotton pique short-sleeve, XS-6X |
| SANL500* | 65/35 poly/cotton short-sleeve, XS-6X |
| SANL500LS* | 65/35 poly/cotton long-sleeve, XS-6X |

Sweatshirts

Many colors available

| | |
|-----------|---|
| SAN18000* | 50/50 cotton/poly crewneck, S-5X |
| SAN18500* | 50/50 cotton/poly hooded pullover, S-5X |
| SAN18600* | 50/50 cotton/poly hooded zipper, S-5X |

Base Layer



Thermal Apparel

60/40 cotton/poly blend breathable material; wicks away moisture; keeps you dry and warm

| | |
|-----------|-------------------|
| PRTUB216* | Long sleeve, M-5X |
| PRTUB215* | Long Johns, M-5X |

Hats



Knit Hats

100% acrylic; available in many colors

| | |
|----------|------------|
| SANCP90* | Cuffed Cap |
| SANCP91* | Beanie |



Insulated Knit Caps

100% acrylic with 3M™ Thinsulate™ lining

| | |
|----------|---------------|
| UB013YER | Hi-vis yellow |
| UB013BKR | Black |



Baseball Caps

Customizable with your logo; many colors available

| | |
|----------|--|
| PAI-439* | Brushed twill and mesh, Velcro® closure |
| PAI-550* | Cotton twill; unstructured; buckle closure |
| PAI-650* | Cotton twill; structured; buckle closure |
| PAI-850* | Brushed twill; structured; buckle closure |

Pants and Shorts



Red Kap® Work Pants

65/35 poly/cotton twill

| Men's | |
|---------|------------------------------------|
| RKPT20* | Dura-Kap® industrial pants |
| RKPT60* | Elastic insert work pants |
| RKPT88* | Cargo pants |
| Women's | |
| RKPT21* | Women's Dura-Kap® industrial pants |
| RKPT61* | Women's Elastic insert work pants |
| RKPT89* | Women's Cargo Pants |



Red Kap® Shorts

65/35 poly/cotton twill

| | |
|---------|----------------------------|
| RKPT66* | Cargo shorts |
| RKPT26* | Industrial work shorts |
| RKPT27* | Women's Plain front shorts |

RESTROOM SUPPLIES

Roll Towels



CCP Hard Roll Towels

Standard quality; 40% post-consumer recycled content; 2" core

| | |
|----------|--|
| 44081 | Brown, 7 ⁷ / ₈ " x 800', 12 rolls/case |
| 43380-12 | White, 7 ⁷ / ₈ " x 800', 12 rolls/case |



Scott® High Capacity Roll Towels

40% post-consumer recycled content

| | |
|-------|---|
| 04010 | 1.5" core; white, 7.85" x 800', 12 rolls/case |
|-------|---|



CCP Premium Hard Roll Towels

High absorbency; 80% post-consumer recycled content

| | |
|-------|--|
| 43300 | 1 ⁵ / ₈ " Core; White, 7 ⁷ / ₈ " x 425', 12 rolls/case |
|-------|--|



CCP Lever Action Roll Towel Dispenser

Easy to use and install

| | |
|--------|---|
| 794325 | Holds rolls up to 8" wide and 8" diameter, 1 each |
|--------|---|



CCP Mechanical Auto-Cut Roll Towel Dispenser

Touchless; hands free operation - no batteries required

| | |
|--------|---|
| 794326 | Holds rolls up to 8" wide and 8" diameter, 1 each |
|--------|---|



CCP Touchless Roll Towel Dispenser

Sophisticated sensor; automatically dispenses when hand is placed over sensor; dispenses 11" sheets

| | |
|--------|---|
| 794327 | Holds rolls up to 8" wide and 8" diameter, 1 each |
|--------|---|

Centerfeed Towels



Centerfeed Roll Towels

| | |
|--------|--|
| 41300 | White, two ply, 13" x 9", 554/roll, 6 rolls/case |
| 43612 | White, two ply, 10" x 8", 600/roll, 6 rolls/case |
| 24552 | White, DRC, 13" x 9", 200/roll, 2 rolls/case |
| 794328 | Centerfeed Dispenser, 1 each |

Toilet Tissue



Southern Soft® Jumbo Roll Toilet Tissue

| | |
|---------|---|
| 7941200 | 3.3" x 1000', white, two-ply, 12 rolls/case |
| 794227 | Dual dispenser, 1 each |



Southern Soft Standard Roll Toilet Tissue

| | |
|---------|---|
| 7941800 | 4" x 4.05", white, one-ply, 1210 sheets/roll, 80 rolls/case |
| 7942800 | 4.5" x 3.8", white, two-ply, 605 sheets/roll, 80 rolls/case |
| 794228 | Two roll standard tissue dispenser, 1 each |

Folded Towels



Southern Soft® White Folded Towels

| | |
|--------|---|
| 43515 | C-Fold, 13" x 10", 200/pack, 12 packs/case |
| 43517 | Multi-Fold, 9.5" x 9.25", 250/pack, 16 packs/case |
| 794329 | Dispenser, smoke gray, 1 each |

Odor Control



Metered Aerosol System

Starter kit contains one can each of Fruit Basket, Orchard Spice, Citrus Grove, and Fresh Garden; dispenser with battery; 30 days of continuous deodorization; each can contains 3400 metered sprays; refills available in 13 fragrances

| | |
|--------|---|
| 079KIT | 4 Cans, 1 Dispenser; 1 Starter Kit/Case |
| 079XX | Refills; 12 Cans/Case |
| 07531L | Dispenser; 1 Each |



AirWorks® Urinal Screen

Continuous odor control; flexible to fit all urinals; available in 9 fragrances

| | |
|------------|--------|
| AWUSXXX-BX | 10/box |
|------------|--------|

RESTROOM SUPPLIES

Hand Soap



LHS Hi-Foaming Bulk Hand Soap

Almond scent; pink; pours into bulk dispensers

644541FA 4 gallons/case



Deb® Refresh™ FOAM Hand Soap

L1UZA Azure Soap; 1 Liter, 6/case

L1ABC AntiBac Soap; 1 Liter, 6/case



Deb® 1 Liter Manual Dispensers

Customizable with your logo

08269 White, 1 each

SDL1LBT Transparent Blue, 1 each

SDL1KBT Transparent Black, 1 each



Aero® Foamy Mango Antibacterial Hand Soap

Enhanced with skin conditioners to ensure mildness

687618SA 18 oz. pump bottle; 12/case

Hand Sanitizer



Deb® InstantFOAM® Non-Alcohol Sanitizer

Lightly perfumed foam sanitizer; kills 99.99% of germs in just 30 seconds

72865 1 Liter, 6/case



1 Liter Dispensers

82119 Black Dispenser, 1 each

08269 Southern Soft White Dispenser, 1 each



KimCare® Instant Hand Sanitizer

Alcohol-based; kills germs without soap and water; light citrus scent; pump bottle

06039 8 oz. bottle, 12/case

Industrial Hand Cleaners



Deb® Kresto® Hand Cleaner

Super heavy duty hand cleaner; deep cleaning without damaging skin

TL2LCK Classic scent; 2 Liter cartridges, 4/case

RTL4LCK Classic scent; 4 Liter cartridges, 4/case

TL2HCK Cherry scent; 2 Liter cartridges, 4/case

RTL4HCK Cherry scent; 4 Liter cartridges, 4/case



Deb® Heritage™ Skin Cleanser

Heavy-duty cleaner dissolves grime, grease, tar, oil, ink, carbon black, and sludge; contains moisturizers and lanolin

70190D 2 Liter cartridges, 4/case

40190 4 Liter cartridges, 4/case



Heavy Duty Dispensers

For use with Deb® Heritage™ and Kresto®

BDL2YVH Black 2 Liter, 1 each

RDL4YVH White, 4 Liter, 1 each



Zep® Cherry Industrial Hand Cleaner with Abrasive

Heavy-duty cherry scented hand cleaner with pumice; removes tough greases, oils, and odors

42840R 1 gallon jug, 4/case

7910001 Pump for gallon jug, 1 each



Great Hand Cleaner

Concentrated, waterless hand cleaner; removes grease, asphalt, inks, paints, tar, adhesives, oil, and more; heavy duty

1-138 1 gallon jug; 4/case

7910003 12 oz. bottle; 12/case

Pre-Moistened Hand Cleaning Wipes



TaskBrand™ Pre-Moistened Hand Wipes

Formulated with orange oil for superior cleaning power to remove grease, oil, paint, dirt, and grime

91476 9" x 12", 75/canister, 6 canisters/case



WetWorks® Pre-Moistened Hand Wipes

Removes grease, oil, paint, dirt, and grime

7986250 9.6" x 9.6", 130/bucket, 4 buckets/case



CONSTRUCTION

PRODUCT GUIDE

WOVEN WIPING CLOTHS
NONWOVEN WIPERS
PPE AND SAFETY
HI-VIS SAFETY APPAREL
FACILITY AND SAFETY SUPPLIES
CHEMICALS
SPILL CONTROL
APPAREL
RESTROOM SUPPLIES



P: 800.321.2840

F: 800.445.8366

www.ccpind.com

